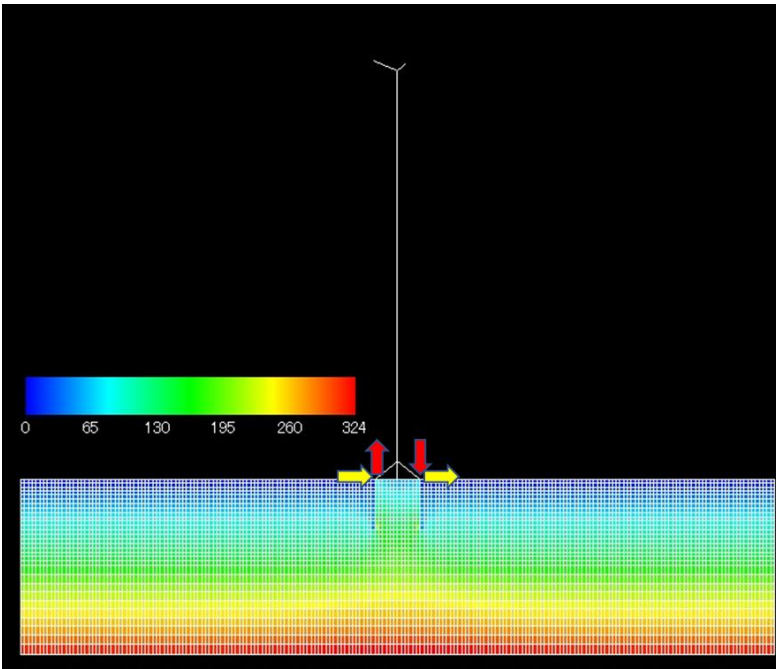


Analysis of offshore wind turbine system subject to wind and wave actions during storm condition

FLIP ROSE 2D is applied to analysis of offshore wind turbine system subject to wind and wave actions during storm condition (NEDO project, 2017).



(Ramboll, Netherland, 2017)



Initial gravity analysis results in the increase in vertical effective stresses inside the bucket relative to those around the bucket.

Wind and wave actions on wind turbine system are idealized as time histories of forced moment and shear force enforced at the locations indicated by the red and yellow arrows in the figure.

The analysis results in the deformation and excess pore water pressure ratios as shown below.

